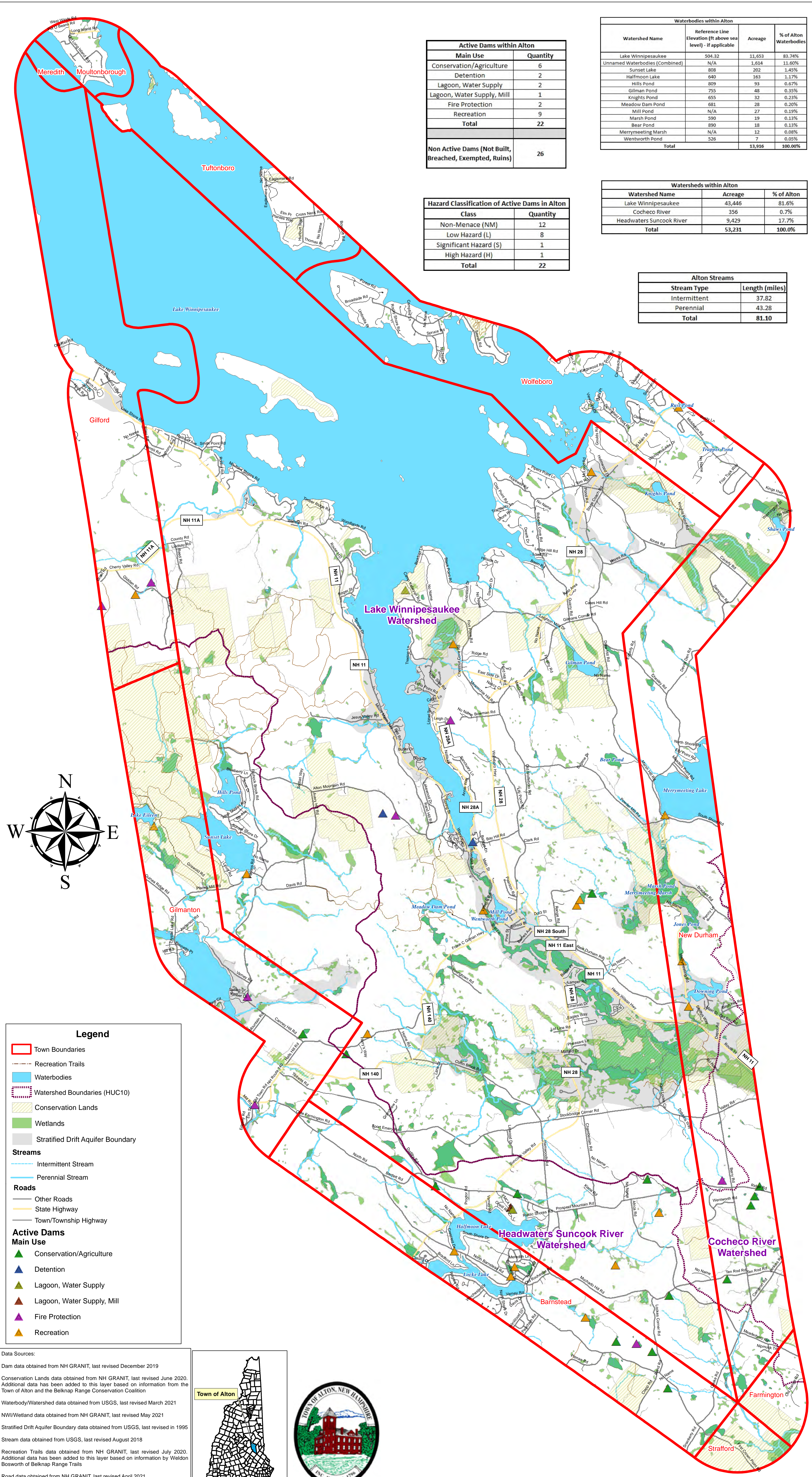


Alton Water Resources



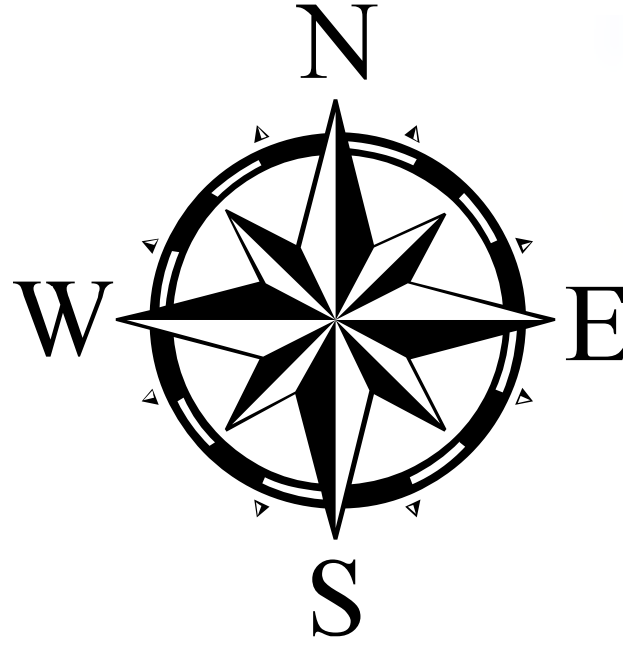
Active Dams within Alton	
Main Use	Quantity
Conservation/Agriculture	6
Detention	2
Lagoon, Water Supply	2
Lagoon, Water Supply, Mill	1
Fire Protection	2
Recreation	9
Total	22
Non Active Dams (Not Built, Breached, Exempted, Ruins)	
	26

Hazard Classification of Active Dams in Alton	
Class	Quantity
Non-Menace (NM)	12
Low Hazard (L)	8
Significant Hazard (S)	1
High Hazard (H)	1
Total	22

Waterbodies within Alton			
Watershed Name	Reference Line Elevation (ft above sea level) - if applicable	Acreage	% of Alton Waterbodies
Lake Winnepesaukee	504.32	11,653	83.74%
Unnamed Waterbodies (Combined)	N/A	1,614	11.60%
Sunset Lake	808	202	1.45%
Halfmoon Lake	640	163	1.17%
Hills Pond	809	93	0.67%
Gilman Pond	755	48	0.33%
Knights Pond	655	32	0.23%
Meadow Dam Pond	681	28	0.20%
Mill Pond	N/A	27	0.19%
Marsh Pond	590	19	0.13%
Bear Pond	890	18	0.13%
Merrymeeting Marsh	N/A	12	0.08%
Wentworth Pond	526	7	0.05%
Total		13,916	100.00%

Watersheds within Alton		
Watershed Name	Acreage	% of Alton
Lake Winnepesaukee	43,446	81.6%
Cochecho River	356	0.7%
Headwaters Suncook River	9,429	17.7%
Total	53,231	100.0%

Alton Streams	
Stream Type	Length (miles)
Intermittent	37.82
Perennial	43.28
Total	81.10



Legend

- Town Boundaries
- Recreation Trails
- Waterbodies
- Watershed Boundaries (HUC10)
- Conservation Lands
- Wetlands
- Stratified Drift Aquifer Boundary

Streams

- Intermittent Stream
- Perennial Stream

Roads

- Other Roads
- State Highway
- Town/Township Highway

Active Dams

Main Use

- Conservation/Agriculture
- Detention
- Lagoon, Water Supply
- Lagoon, Water Supply, Mill
- Fire Protection
- Recreation

Data Sources:

Dam data obtained from NH GRANIT, last revised December 2019

Conservation Lands data obtained from NH GRANIT, last revised June 2020. Additional data has been added to this layer based on information from the Town of Alton and the Belknap Range Conservation Coalition

Waterbody/Watershed data obtained from USGS, last revised March 2021

NWI/Wetland data obtained from NH GRANIT, last revised May 2021

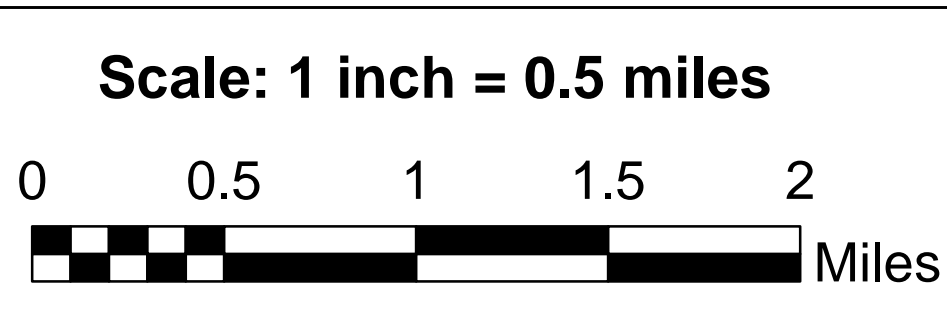
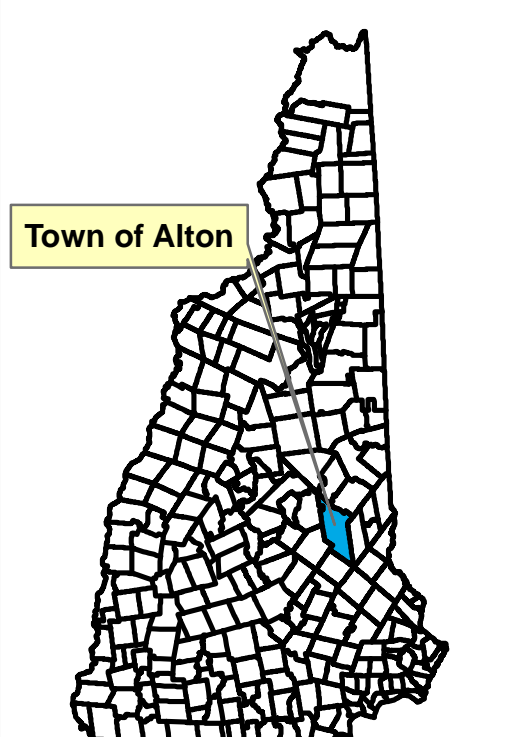
Stratified Drift Aquifer Boundary data obtained from USGS, last revised in 1995

Stream data obtained from USGS, last revised August 2018

Recreation Trails data obtained from NH GRANIT, last revised July 2020. Additional data has been added to this layer based on information by Weldon Bosworth of Belknap Range Trails

Road data obtained from NH GRANIT, last revised April 2021

Town boundary data obtained from NH GRANIT, last revised April 2013



Alton Water Resources NRI Map
 Created: September 28, 2021
 Last revised: October 6, 2022

Prepared for the Town of Alton, NH
 This map should only be used for planning purposes,
 not for legal bound interpretation.

Stoney Ridge Environmental, LLC
 8 Kiana Road
 Alton, NH 03809
 Phone: 603-776-5825

