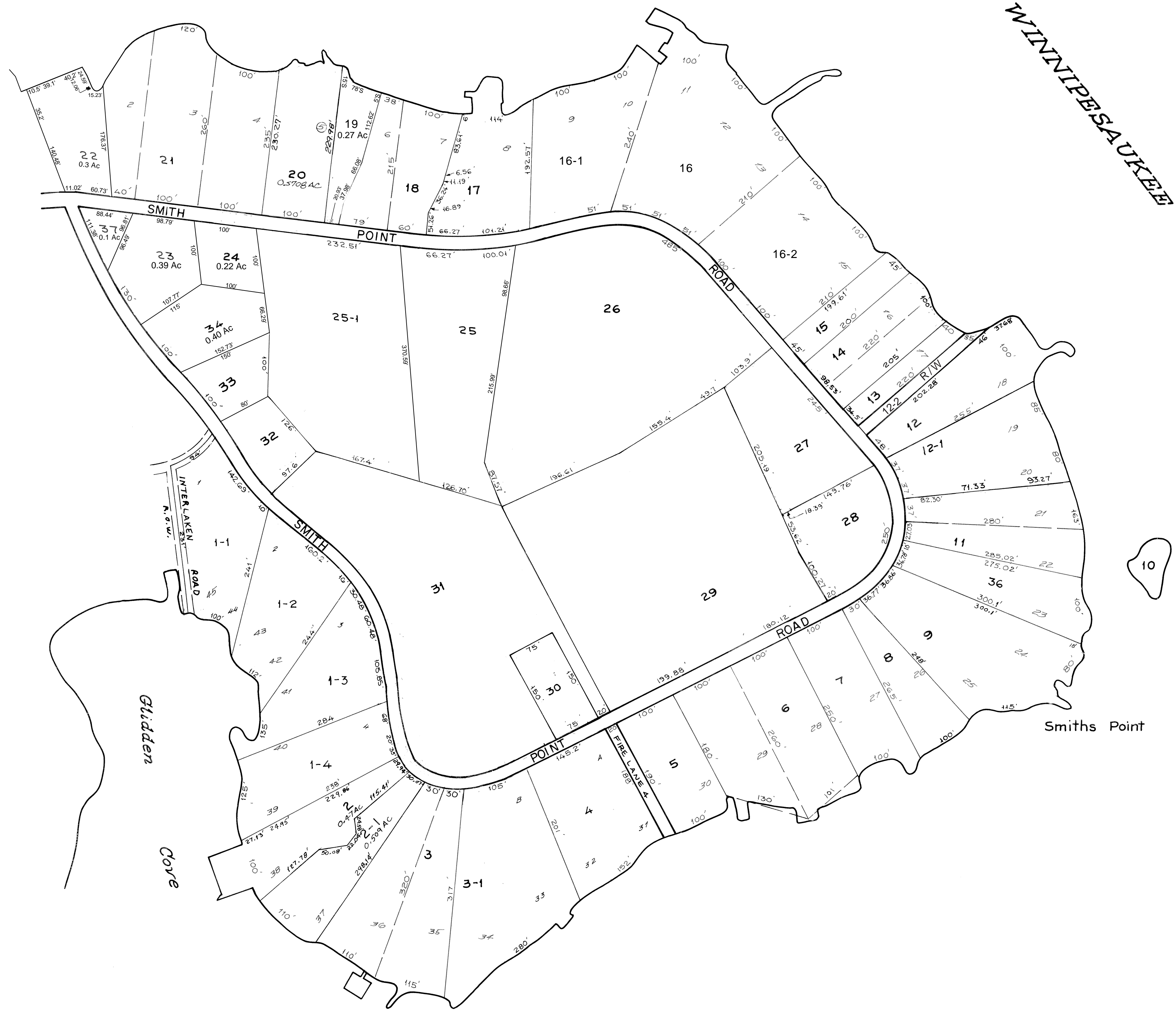


LAKE

WINNIPESAUKEE



63

10

Smiths Point

NO PARCEL 35

LEGEND
 PARCEL NUMBERS 1
 ADJACENT MAPS 2
 MATCH LINE 3

For Assessment Purposes
Not to be used for Conveyances

REVISED & REPRINTED BY
CAI TECHNOLOGIES
LITTLETON NH 03561

PROPERTY MAP
TOWN OF ALTON
 BELKNAP COUNTY, NEW HAMPSHIRE
 PREPARED BY
 JAMES W. SEWALL COMPANY OLD TOWN, MAINE
 SCALE 1 INCH = 400 ± FEET